



轴承型号 NNF5852-2LSV

外形尺寸(mm)

d: 260

D: 320

B: 80

极限转速(rpm)

脂润滑: -

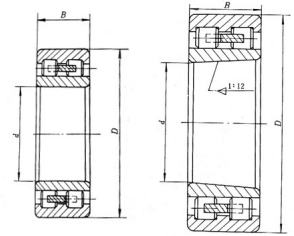
油润滑: -

额定载荷

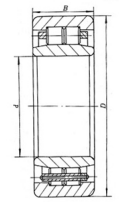
Cr(N): -

Cr(N): -

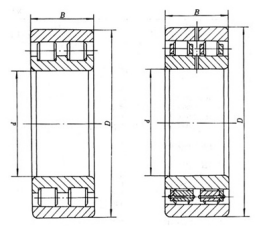
重量(kg) 15.3



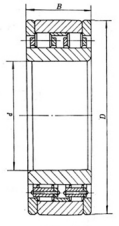
NNU0000 型 (482000 型)      NNU0000K 型 (382000 型)



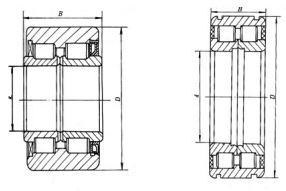
NNU0000-YAS 型 (472000 型)  
内圈无挡边的双列圆柱滚子轴承



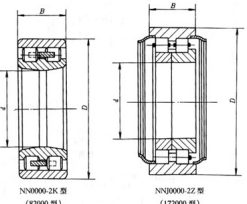
NN0000V 型 (682000 型)      NN0000 型 (782000 型)



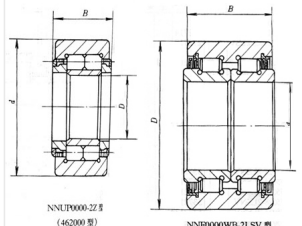
NS0000 型 (982000 型)  
无挡边/无保持架/外圈带平挡圈的双列圆柱滚子轴承



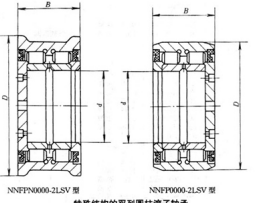
NS0000-2LSV 型 (122000 型)      NS0000-2LSV-K 型 (122000 型)  
两面带密封圈的雙內圈，无保持架的双列圆柱滚子轴承



NN0000-2K 型 (82000 型)      NN0000-2Z 型 (172000 型)



NNLP0000-2Z 型 (462000 型)      NNFP0000WB-2LSV 型



NNFP0000-2LSV 型      NNFP0000-2LSV-K 型  
特殊结构的双列圆柱滚子轴承